

SEWING BAG

The Vintage Gardener

Finished size of design

13 × 18cm (5½ × 7in) approx. embroidered area

Finished size of bag

18.75 × 28cm (7½ × 11in) not including handles

The embroidery pattern for tracing this design is on page 153.

I designed the sewing bag with the crinoline lady on it to give a slightly different twist to what was a very popular design style for embroidery in the 1930s and 1940s.

The piece was created to store all your needlework accessories created in this book.

If you would prefer to design a garden without the lady on your bag, use one of the suggested patterns, or create your own garden. Likewise, the writing on the second side could be replaced with a garden design. *Under the Arches* (see page 102) and *An Abundance of Flowers* (see page 94) would make ideal garden designs for your bag too. The bag itself was designed by Jennifer Jones of Alton, Hampshire.

A lightweight linen/cotton blend was used for the lining of the bag, which makes for easier sewing when constructing the bag and completing the seams. There are two size buttons that can be used for the bag: either 29mm (1in) or 39mm (1½in). If you prefer to use the larger button, then the button tab needs to be wider. For this you would use the entire tab as is and add on a seam allowance. If you use the smaller tab for the 29mm button, then use the tab and seam allowance as supplied in the pattern. The smaller button was used on the prototype, whereas the larger button was used on the finished bag (see the photograph on page 108).

In my prototype, I only added the one pocket, as in the You will need box, but in the actual embroidered piece, I inserted two pockets.

Prototype of my sewing bag.



You will need

- One 40 × 140cm (16 × 56in) piece of linen/cotton blend fabric, suitable for embroidery.
- One 40 × 140cm (16 × 56in) piece of lining – any suitable fine linen or cotton.
- Two 35 × 45cm (14 × 18in) pieces of muslin for backing (see page 32).
- One 13cm (5in) square of muslin for the button.
- Two 20 × 31cm (8 × 12in) pieces of interlining – wadding/felt – lightweight for interlining the front and back panels.
- One 45 × 90cm (18 × 35in) piece of lightweight iron-on Vilene (stabilizer) for the pockets, the tab and the handles.
- One 10 × 22.5cm (4 × 9in) piece of pelmet Vilene (stabilizer) for the base.
- Five metal electrical washers for the dress – size M2.
- One metal button for covering: 29mm (1in) or 39mm (1½in).
- 10cm (4in) embroidery hoop/frame – for the button.
- 20cm (8in) embroidery hoop or a 30cm (12in) Able frame, Millennium frame or a slate frame.
- Matching sewing machine thread.

TAPE MEASURE COVER

Bee Alert

Finished size of design

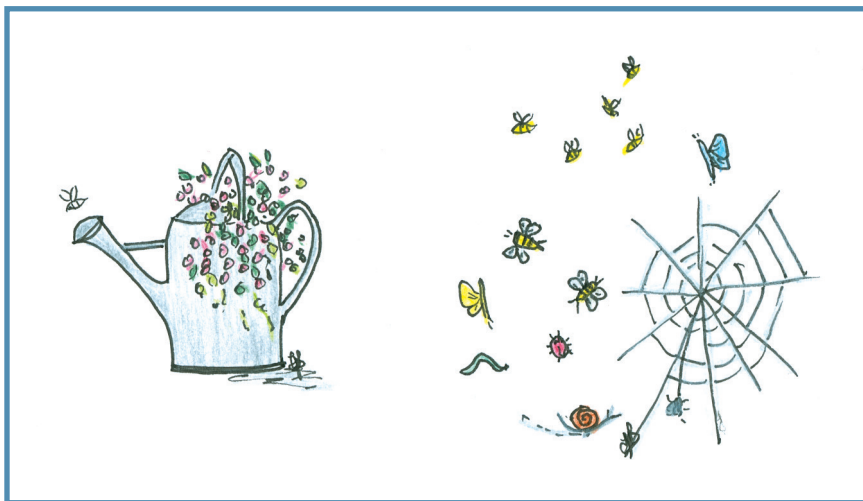
3 × 4cm (1¼ × 1¾in) approx. embroidered area for the watering can;
5cm (2in) diameter, approx. embroidered area for the insects;
Side panel 2 × 16.5cm (¾ × 6¾in) embroidered with bees

Finished size of tape measure cover

5.5cm (2¼in)

The embroidery pattern for tracing this design is on page 155.

A retractable tape measure is a tool I always carry on me, both in my embroidery toolbox and in my handbag. The measurements opposite are for my tape measure, which is a common size – 5cm (2in), but make sure you measure the diameter of yours first before making your templates. Neither of my two tape measures are exactly the same in size.



You will need

One 18 × 28cm (7 × 11in) piece of linen/cotton blend fabric.

One 18 × 28cm (7 × 11in) piece of muslin for backing.

One 18cm (7in) square of felt/wadding.

One 3 × 18cm (1¼ × 7in) piece of linen/cotton blend fabric.

One 2 × 18cm (¾ × 7in) iron-on Vilene (stabilizer).

Threads: As well as the suggested threads on page 21, you will also need one skein of pale green hand-dyed stranded cotton for edging.

Cardboard or a thin template plastic for creating the design template, as well as for making the inserts.

13cm (5in) embroidery hoop/frame.

Glue stick or glue gun.