

Bull

Instructions

Body

Using yarn A, cast on 35 sts.

Rows 1–7: beg with a k RS row, work 7 rows in st/st.

Row 8: cast off 5 sts, p to end (30 sts).

Row 9: cast off 5 sts, k to end (25 sts).

Row 10: cast on 3 sts, p to end (28 sts).

Row 11: cast on 3 sts, k to end (31 sts).

Rows 12–19: work 8 rows in st/st.

Row 20: cast off 3 sts, p to end (28 sts).

Row 21: cast off 3 sts, k to end (25 sts).

Row 22: cast on 5 sts, p to end (30 sts).

Row 23: cast on 5 sts, k10, kf/b, k3, kf/b, k to end (37 sts).

Row 24: p to end.

Row 25: k6, kf/b, k8, kf/b, k5, kf/b, k8, kf/b, k to end (41 sts).

Rows 26–29: work 4 rows in st/st.

Row 30: cast off 5 sts, p to end (36 sts).

Row 31: cast off 5 sts, k to end (31 sts).

Row 32: cast off 9 sts, p to end (22 sts).

Row 33: cast off 9 sts, k to end (13 sts).

Row 34: cast on 4 sts, p to end (17 sts).

Row 35: cast on 4 sts, k to end (21 sts).

Rows 36–39: work 4 rows in st/st.

Row 40: p2tog, cast off the st on the right needle, cast off all sts to the last 2 sts, p2tog, cast off the last st.

Ears: make two

Using yarn A, cast on 3 sts.

Row 1: p2tog, p1 (2 sts).

Row 2: skpo (1 st).

Fasten off.

Horn

Using yarn B, cast on 2 sts.

Work in i-cord for 8 rows. Pass the first st over the second and fasten off.

Nose ring

Using yarn C and the crochet hook, make 5 ch. Fasten off.

Tail

Using yarn E, make tail (see page 18).

Materials

10g (¼oz) of DK (8-ply) yarn in red brown (A) and small amounts in off-white (B), gold (C) and dark brown (D)

Small amount of 4-ply (fingering) yarn in brown (E)

Stuffing

Additional equipment

3mm (UK 11, US C/2 or D/3) crochet hook

Size

8cm (3¼in) long,
7cm (2¾in) tall

Difficulty level

Intermediate

To make up

Referring to the basic animal assembly on pages 16 and 17, sew the legs. Starting between the front legs, sew the underside of the front body, chin and face. Stuff each leg and the body firmly and close the tummy opening. Sew the ears, horn, tail and nose ring in place. Using yarn D, work a French knot for each eye.



Cow



Instructions

Body

Using yarn A, cast on 35 sts.
Work rows 1–22 of chart. Note: the first row of the chart is a RS row; WS rows are read from left to right and RS rows from right to left.
Break yarn B. Using yarn A only, work rows 23–40 as given for the bull (see page 36).

Ears, tail and nose ring

Work as given for the bull, using yarn A for the ears, yarn C for the tail and yarn D for the nose ring.

Horn

Work as given for the bull, using yarn E.

Udder

Using yarn F, cast on 8 sts.
Beg with a k RS row, work 14 rows in st/st. Cast off.
Using yarn F, make two large French knots in the centre of the udder piece.

To make up

Make up as given for the bull, using yarn D to work a French knot for each eye. Sew the udder in place.

Materials

8g (1½oz) of DK (8-ply) yarn in white (A) and small amounts in black (B), dark brown (D), brown (E) and pale pink (F)

Small amount of 4-ply (fingering) yarn in light brown (C)

Stuffing

Additional equipment

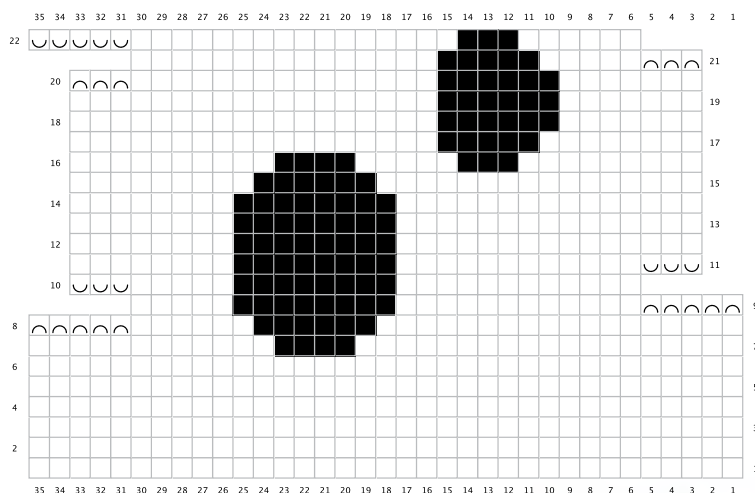
3mm (UK 11, US C/2 or D/3) crochet hook

Size

8cm (3¼in) long,
7cm (2¾in) tall

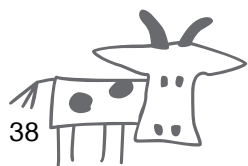
Difficulty level

Intermediate



Key

- Yarn A
- Yarn B
- Cast off 1 st
- Cast on 1 st (k or p across these sts after casting them on)



38





Greengrocer

Instructions

Legs, body and head

Using yarn A and starting with the right leg, cast on 10 sts.

Rows 1–10: beg with a k RS row, work 10 rows in st/st.

Break yarn, place sts on a holder.

For the left leg:

Rep rows 1–10 as for right leg, but do not break yarn.

Row 11: working across left leg sts then right leg sts, k8, (k2tog) twice, k to end (18 sts).

Rows 12–18: change to yarn B and work 7 rows in st/st.

Row 19 (shape neck): (k1, k2tog) to end (12 sts).

Row 20: change to yarn C and p to end.

Row 21: k3, (kf/b) six times, k3 (18 sts).

Rows 22–24: work 3 rows in st/st.

Row 25 (shape eyeline): k3, (k2tog, k1) four times, k3 (14 sts).

Rows 26–28: work 3 rows in st/st.

Row 29: (k2, k2tog) to last 2 sts, k2 (11 sts).

Break yarn, thread through all sts and pull tightly. Fasten off.

Hat

Using yarn D, cast on 20 sts.

Rows 1–5: beg with a p WS row, work 5 rows in st/st.

Row 6: (k2, k2tog) to end (15 sts).

Row 7: p2tog to last st, p1 (7 sts).

Break yarn, thread through all sts and pull tightly. Fasten off.

With RS facing, pick up and k8 sts from the front centre edge.

Beg with a p WS row, work two 2 rows in st/st.

Next row: p2tog, p to last 2 sts, p2tog (6 sts).

Cast off.

Shoes: make two

Work as given for the farmer on page 64, using yarn E.

Arms: make two

Using yarn B, cast on 4 sts. Work an i-cord for 5 rows.

Row 6: change to yarn C, k1, k2tog, k1 (3 sts).

Break yarn, thread through all sts and pull tightly. Fasten off.

Apron

Using yarn F, cast on 12 sts.

Row 1–9: st/st, starting with p row.

Row 10: cast off 2 sts, k to last 2 sts, cast off to end (8 sts).

Row 11: with WS facing, join yarn and p to end.

Rows 12–15: st/st.

Cast off.

Pocket

Using yarn F, cast on 8 sts.

Rows 1–4: beg with a p WS row, work 4 rows in st/st.

Row 5: p2tog, p to last 2 sts, p2tog (6 sts).

Cast off.

To make up

Refer to the basic figure assembly on page 20 for sewing up the body, attaching the arms, shoes and so on, and then use yarn E to make a French knot for each eye. Make the hair before attaching

Materials

Small amounts of DK (8-ply) yarn in khaki brown (A), beige (B), skin colour (C), light green (D) and dark brown (E)

Small amounts of 4-ply (fingering) yarn in green (F) and light brown (G)

Stuffing

Size

9cm (3½in) tall

Difficulty level

Advanced

the hat by threading a needle with a length of yarn G and make backstitches on the head, making short loops around the sides of the face. Cut the loops open and separate the strands. Sew the bottom edge and sides of the pocket onto the front of the apron. Attach a short length of yarn to the top of the apron and loop around the neck, then add short lengths of yarn to each side of the apron middle and tie in a bow around the waist. Secure the apron in place with a few small stitches at each side.

